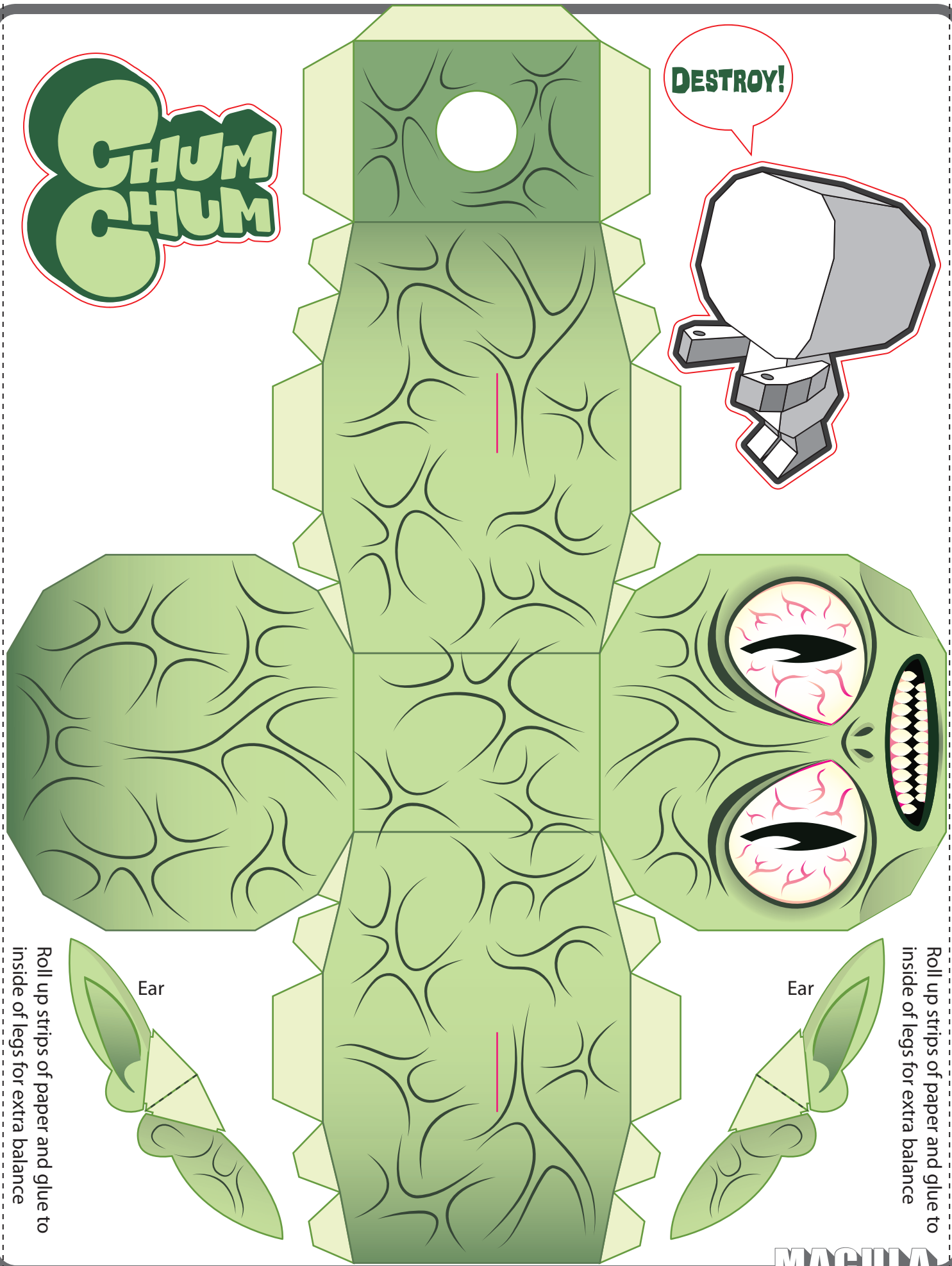
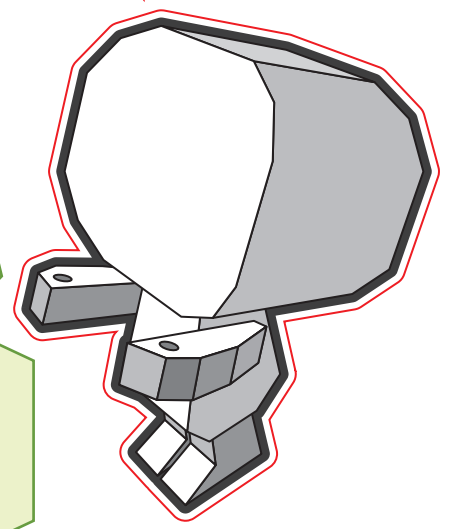


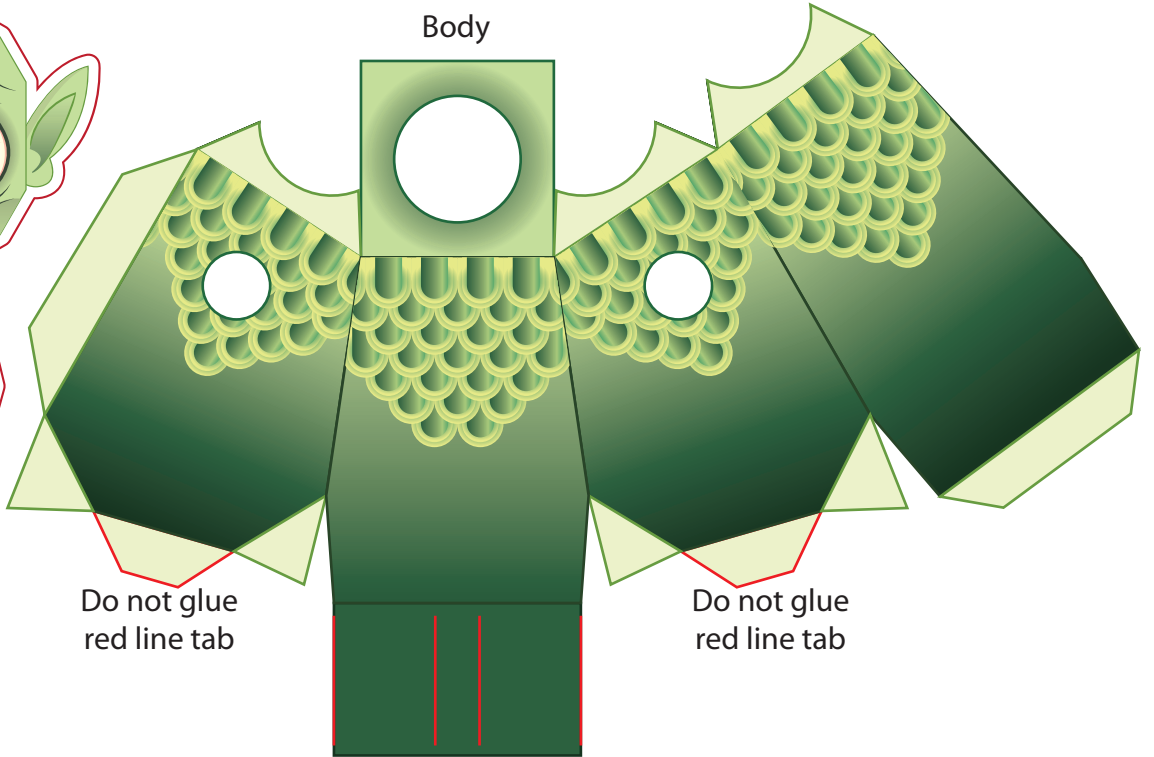
**CHUM  
CHUM**

**DESTROY!**



Roll up strips of paper and glue to inside of legs for extra balance

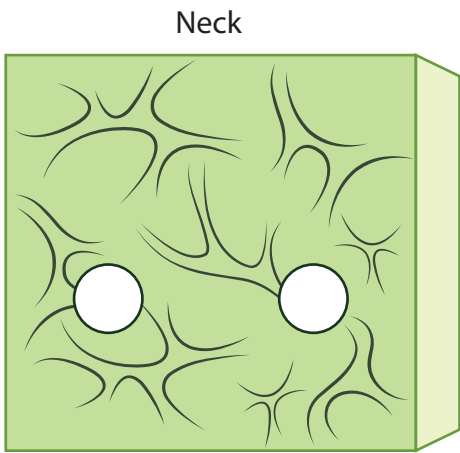
Roll up strips of paper and glue to inside of legs for extra balance



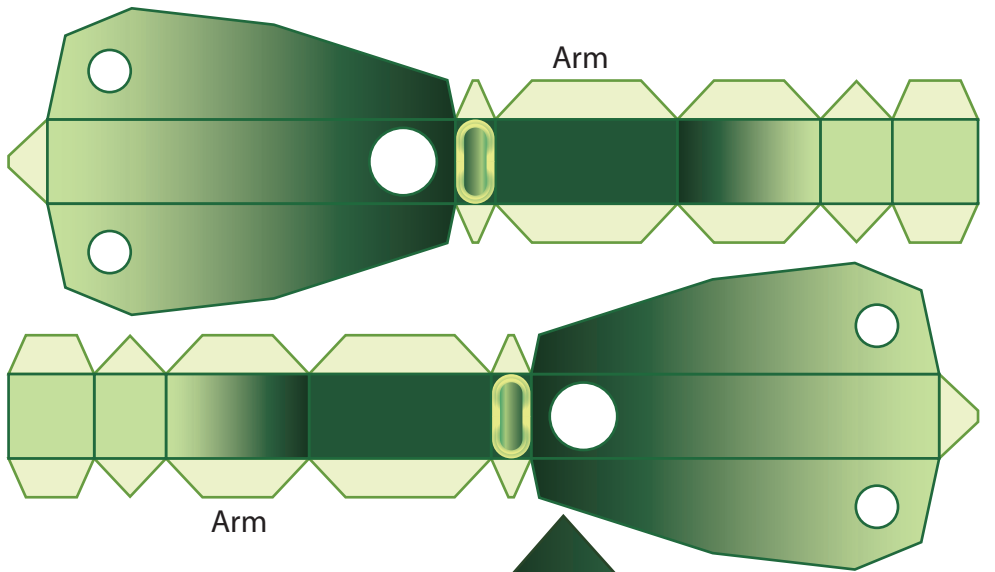
Body

Do not glue red line tab

Do not glue red line tab

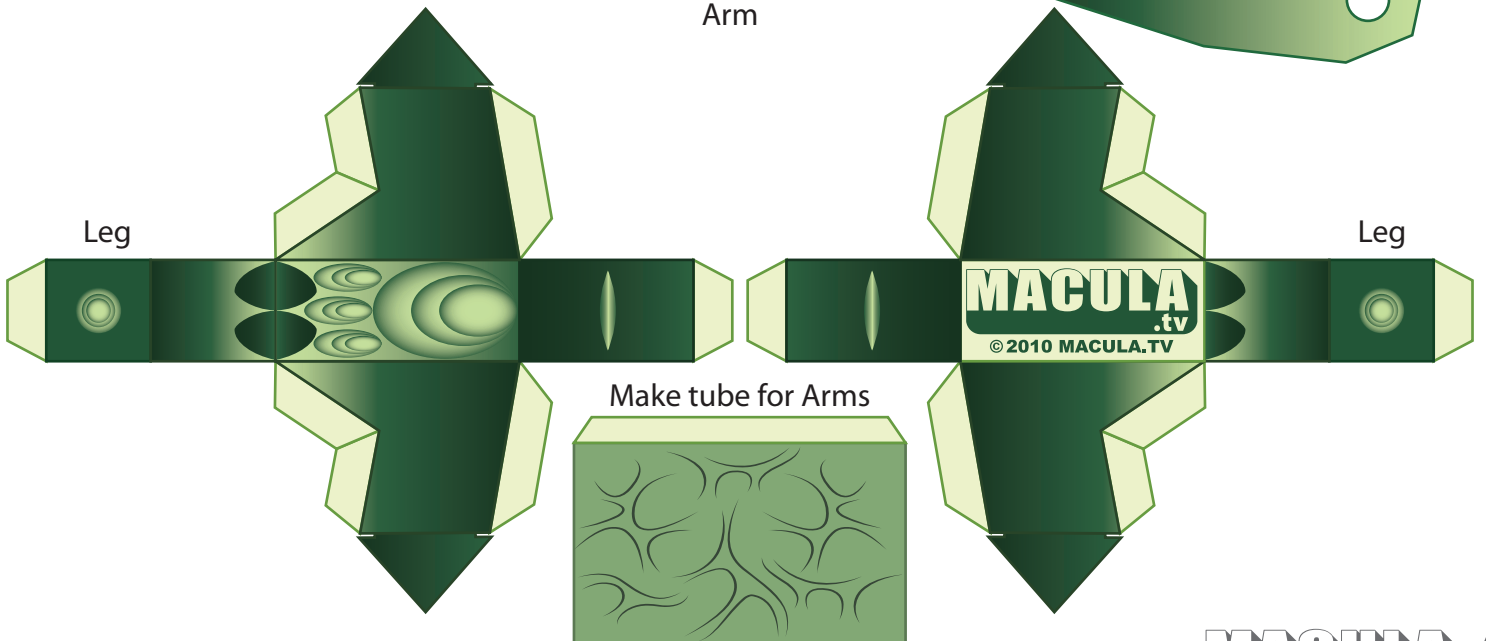


Neck



Arm

Arm



Leg

Leg

Make tube for Arms

MACULA .tv  
© 2010 MACULA.TV